

Beuk 2002 ✓

Colophon

Design:

Varwig Design, Hengelo
Mark van Waadenoijen
Dagmar Ankoné
Erik de Bruin

Printed by:

Giethoorn ten Brink, Meppel

This publication was made possible through the support of the following:

European Invertebrate Survey – Nederland, Leiden
Nationaal Natuurhistorisch Museum/Naturalis, Leiden
Prins Bernhard Cultuurfonds
Volkert S. van der Goot (deceased)
Zoölogisch Museum, Universiteit van Amsterdam, Amsterdam

ISBN: 90 5011 163 7

P.L.T. Beuk (ed.)

Checklist of the Diptera of the Netherlands
KNNV Uitgeverij, Utrecht 2002

© 2002 KNNV Uitgeverij, Utrecht

No part of this book may be reproduced in any format by print, photocopy, microfilm or by any other means without the written permission from the publisher.



Family Milichiidae

Paul L.Th. Beuk

Diagnosis. Small to very small, greyish black or shining black flies, sometimes with conspicuous silvery dusting. Lower fronto-orbital setae inclinate (sometimes reduced or absent); upper fronto-orbital setae proclinate or curved outwards. Costa with humeral and subcostal breaks; subcosta entire, but sometimes very thin. Tibiae without preapical setae. Ocellar triangle well developed. Proboscis often elongate; palpi large to very large and setose; vibrissae present, often very thin.



Leptommetopa latipes (Meigen, 1830)

Biology. The larvae are coprophagous or saprophagous in the widest sense; living in organic detritus like decaying plants, dung, kitchen refuse and birds' nests. Adult flies may be caught on carrion and dung; some species are associated with ants. Some species even attach themselves to other, predatory Diptera (e.g. Asilidae) or even to Reduviidae or spiders, by which they are transported until a prey is captured. Afterwards they suck the exudations from the wounds of the victim in company of the predator.

General references. Hennig (1937 [general, keys], 1956 [larvae]), Papp (1984d [catalogue]), Papp & Wheeler (1998 [general, key to genera]), Sabrosky (1983 [*Desmommetopa*], 1987b [general, key to genera]).

References to Dutch fauna. Beuk & Brake (1996), De Meijere (1940, 1946a).

NL: 8 B: 6 D: 13 UK: 9 World: ± 240

MILICHIIDAE

MADIZINAE

DESMOMETOPA Loew, 1866

m-nigrum (Zetterstedt, 1848)

sordida (Fallén, 1820)

N; added by Beuk & Brake (1996: 61)

N

LEPTOMETOPA Becker, 1903

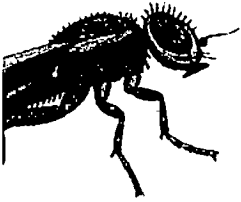
latipes (Meigen, 1830)

= *annulitarsis* (Zetterstedt, 1848)

= *niveipennis* (Strobl, 1900)

= *simplicipes* (Becker, 1907)

N



MADIZA Fallén, 1810
glabra Fallén, 1820

N

PHYLLOMYZA Fallén, 1810
formicae Schmitz, 1923
longipalpis (Schmitz, 1924)
securicornis Fallén, 1823
= *flavitaris* (Meigen, 1830)

N; will be formally added by Beuk (in prep.)
T
N

MILICHIINAE

MILICHA Meigen, 1830
ludens (Wahlberg, 1847)

Nomina dubia

broersel De Meijere, 1946 (*Leptometopa*)
pallida De Meijere, 1940 (*Phyllomyza*)

T; added by De Meijere (1946a: 17) Note 1
T; added by De Meijere (1940: 222) Note 1

Notes

1 Species considered to be doubtful by Papp (1984d). Examination of material should establish whether this is a valid species or a synonym of another species.

T: Type